



Tue, September 4, 2018

# Vietnam Daily Review

## Selling force overwhelmed

BSC's Forecast on the stock market

|                   | Negative | Neutral | Positive |
|-------------------|----------|---------|----------|
| Day 5/9/2018      |          | ●       |          |
| Week 3/9-7/9/2018 |          | ●       |          |
| Month 7/2018      |          | ●       |          |

### Highlights

- The market fluctuated in the morning session and strongly decreased in the afternoon session.
- The leaders were VHM (+0.75 points); YEG (+0.11 points); VHC (+0.05 points); SJS (+0.02 points); TCH (+0.02 points)
- The laggards were BID (-2.02 points); VJC (-1.83 points); VCB (-1.68 points); CTG (-1.45 points); VIC (-1.29 points)
- Cash flow focused on seafood and energy stocks, liquidity slightly decreased.
- The trading value of VN-Index in today session reached 3637.4 billion. The trading range was 16.24 points. The market recorded 105 gainers and 190 decliners.
- By the ending of the session, VN-Index decreased 13.6 points, closing at 975.94 points. HNX-Index declined 1.57 points to 111.23 points.
- Foreign investors today net sold 6.11 billion on HOSE, focusing on VNM (41.89 billion), VRE (30.78 billion) and BID (20.51 billion). However, they net bought 18.21 billion on HNX.

### Market outlook

At the beginning of the first trading session in September, the market index had a slight increase of 2.64 points at the beginning of the morning session. However, profit taking pressure from the middle of the session pushed the index down slightly. In the afternoon session, the profit-taking pressure continued to increase with strong selling pressure in stocks of banking and securities sectors which pushed the market down deeply in today session. Due to the strong selling pressure of local investors, foreign investors turned to net sell at the end of afternoon session. In the view of the BSC, the market is in a correction phase and market sentiment is affected by worries over the timing of the announcement of tariff policy to 200 billion US Chinese goods are approaching as well as Fed raised interest rates at the end of September.

### Technical analysis

#### HDG\_Cumulative

(Please go to **page 2** for buy/sell status of stocks and **page 4** for Blue chip stocks information)

## BSC RESEARCH

### Head of Research

Tran Thang Long

longtt@bsc.com.vn

### Macro & Market Team

Bui Nguyen Khoa

khoabn@bsc.com.vn

Tran Thanh Hung

hungtt@bsc.com.vn

Le Quoc Trung

trunglq@bsc.com.vn

**VN-INDEX** **975.94**

Value: 3637.4 bil **-13.6 (-1.37%)**

Foreigners (net): -VND 6.11 bil

**HNX-INDEX** **111.23**

Value: 730.5 bil **-1.56 (-1.38%)**

Foreigners (net): VND 18.21 bil

**UPCOM-INDEX** **51.55**

Value 162.1 bil **-0.31 (-0.6%)**

Foreigners (net): VND 2.34 bil

### Macro indicators

|                        | Value  | % Chg  |
|------------------------|--------|--------|
| Crude oil              | 71.1   | 1.82%  |
| Gold                   | 1,196  | -0.44% |
| USDVND                 | 23,315 | 0.07%  |
| EURVND                 | 26,919 | -0.82% |
| JPYVND                 | 20,918 | -0.27% |
| 1-month Interbank rate | 0.0%   | 0.00%  |
| 5yr VN Treasury Yield  | 4.8%   | 0.00%  |

Source: Bloomberg, BSC Research

### Top Foreign trading stocks

| Top Buy | Value | Top Sell | Value |
|---------|-------|----------|-------|
| MSN     | 37.60 | VNM      | 41.80 |
| YEG     | 29.60 | VRE      | 30.70 |
| VCB     | 29.50 | BID      | 20.50 |
| VJC     | 10.70 | NVL      | 17.10 |
| DXG     | 8.80  | SCR      | 10.00 |

Source: Bloomberg, BSC Research

|                      |        |
|----------------------|--------|
| Market Outlook       | Page 1 |
| Technical Analysis   | Page 2 |
| Derivatives market   | Page 2 |
| Stock recommendation | Page 3 |
| Importance stocks    | Page 4 |
| Market Statistics    | Page 5 |
| Disclosure           | Page 6 |

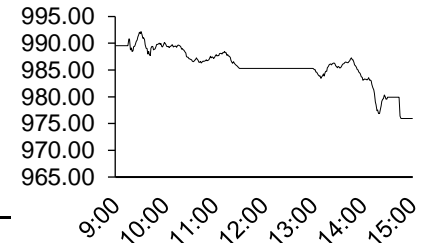
# Noticable stocks update

Tran Thanh Hung

[hungtt@bsc.com.vn](mailto:hungtt@bsc.com.vn)

Exhibit 1

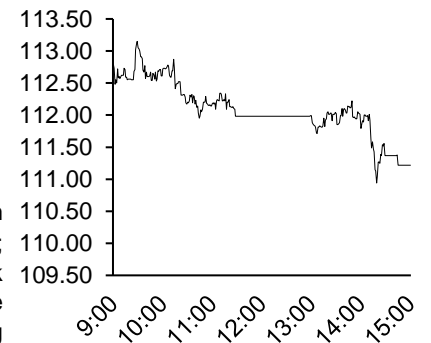
HSX-Index Intraday



Source: Bloomberg, BSC Research

Exhibit 2

HNX-Index Intraday



Source: Bloomberg, BSC Research

| Ticker | Liqui (Bil) | Close (k VND) | Support (k VND) | Resis (k VND) | Status    | Notes                 |
|--------|-------------|---------------|-----------------|---------------|-----------|-----------------------|
| HPG    | 7.7         | 39.0          | 37              | 41            | STOP BUY  | Short term rebound    |
| PVS    | 7.0         | 21.8          | 18              | 23            | BUY       | Long term uptrend     |
| ASM    | 5.6         | 12.9          | 12              | 13            | BUY       | Long term uptrend     |
| VPB    | 5.3         | 25.7          | 25              | 28            | BUY       | Long term downtrend   |
| VNM    | 4.7         | 156.7         | 152             | 164           | STOP SELL | Long term downtrend   |
| SSI    | 4.4         | 30.7          | 29              | 32            | STOP SELL | Short term rebound    |
| VJC    | 3.5         | 145.1         | 144             | 155           | STOP SELL | Long term downtrend   |
| MSN    | 3.4         | 94.0          | 89              | 100           | BUY       | Long term uptrend     |
| FLC    | 3.0         | 6.3           | 6               | 7             | STOP SELL | Long term uptrend     |
| GEX    | 2.8         | 28.1          | 28              | 31            | STOP SELL | Short term correction |

## Technical Analysis

### HDG\_Cumulative

#### Technical highlights:

- Current Trend: Cumulating
- MACD trend: Divergence on the center line.
- RSI: Overbought and is correcting down
- MACD: MA 20 cut MA 50 and MA 20 is approaching MA200.

**Comment:** HDG stock is in the accumulation phase, fluctuating in the price channel from 31.5 to 36. RSI is overbought and tends to adjust. At present, liquidity remains moderate; 3 MA trend indicates that stock prices are recovering and surpass MA200 price. The stock is currently testing the support level of 34, if lost, the stock will be supported by the support level of 31.5. If the test of 34 as a support level is a success along with increasing liquidity, the stock will approach and test the resistance level of 36.

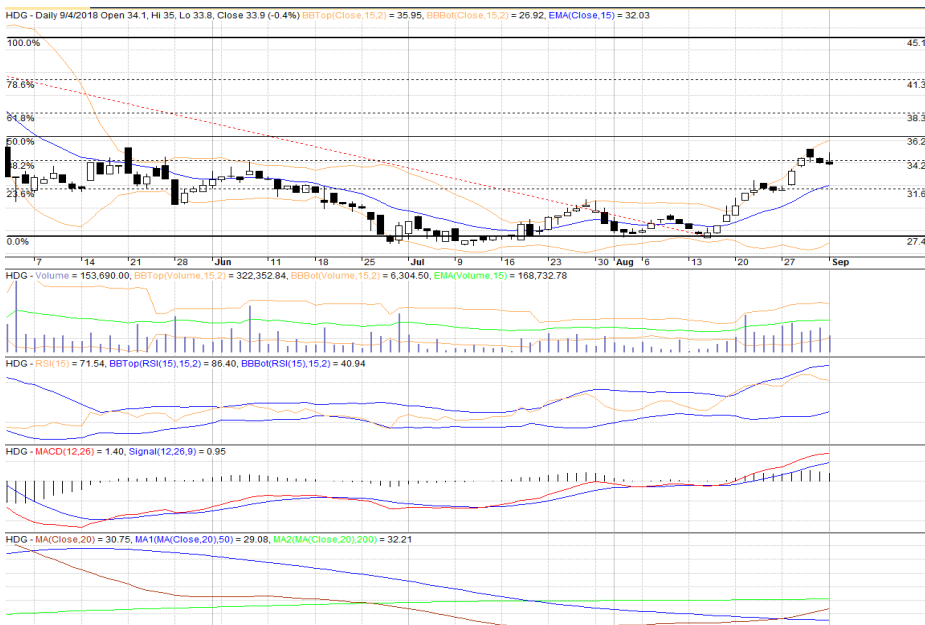


Table 1

#### Index Future Contracts

| Ticker    | Close | ± price | ± Volume |
|-----------|-------|---------|----------|
| VN30F1809 | 956.0 | -1.0%   | 3.2%     |
| VN30F1810 | 955.8 | -1.2%   | -17.1%   |
| VN30F1812 | 955.9 | -0.8%   | -11.8%   |
| VN30F1903 | 957.0 | -1.0%   | 10.0%    |

Table 2

#### Top leaders VN30

| Ticker | Close | ± Price | Index pt |
|--------|-------|---------|----------|
| BMP    | 57    | 1.1     | 0.0      |
| DPM    | 18    | 0.9     | 0.0      |
| KDC    | 30    | 0.5     | 0.0      |
| DHG    | 93    | 0.4     | 0.0      |
| GAS    | 103   | 0.0     | 0.0      |

#### Top Laggards VN30

| Ticker | Close | ± Price | Index pt |
|--------|-------|---------|----------|
| VJC    | 145   | -7.0    | -5.1     |
| VRE    | 38    | -3.7    | -2.1     |
| HPG    | 39    | -2.4    | -2.1     |
| MBB    | 23    | -2.5    | -1.2     |
| VIC    | 102   | -1.3    | -1.1     |

## Stocks recommendation

### Short-Term Portfolio

| No.            | Ticker | Date      | Buy Price | Current Price | Unrealized gain / loss | Cutloss | Target |
|----------------|--------|-----------|-----------|---------------|------------------------|---------|--------|
| 1              | REE    | 20/7/2018 | 32.70     | 35.4          | 8.3%                   | 30.1    | 37.6   |
| 2              | PLX    | 31/7/2018 | 60.50     | 67.4          | 11.4%                  | 55.7    | 69.6   |
| 3              | TCM    | 7/8/2018  | 19.55     | 22.2          | 13.6%                  | 18.0    | 22.5   |
| 4              | HT1    | 22/8/2018 | 12.60     | 12.6          | -0.4%                  | 11.6    | 14.5   |
| <b>Average</b> |        |           |           |               | <b>8.2%</b>            |         |        |

Source: BSC Research

### CANSLIM Portfolio

| No.            | Ticker | Date       | Buy  | Current | Unrealized   | Cutloss | Target |
|----------------|--------|------------|------|---------|--------------|---------|--------|
| 1              | MBB    | 27/4/2015  | 13.8 | 23.1    | 67.4%        | 34.4    | 37.1   |
| 2              | HPG    | 28/10/2016 | 25.5 | 39.0    | 53.1%        | 24.2    | 43.5   |
| 3              | HCM    | 18/09/2017 | 41.9 | 60.1    | 43.4%        | 39.8    | 60.0   |
| 4              | GEX    | 2/4/2018   | 29.4 | 28.10   | -4.4%        | 27.9    | 40.0   |
| <b>Average</b> |        |            |      |         | <b>39.9%</b> |         |        |

Source: BSC Research

### Fundamental portfolio

| No.            | Ticker | Date       | Buy   | Current | Unrealized   | Cutloss | Target |
|----------------|--------|------------|-------|---------|--------------|---------|--------|
| 1              | PVT    | 23/06/2016 | 11.1  | 17.5    | 57.7%        | 17.0    | 22.7   |
| 2              | CTI    | 29/07/2017 | 29.7  | 30.4    | 2.4%         | 31.2    | 36.3   |
| 3              | ACB    | 2/2/2018   | 37.3  | 38.0    | 1.9%         | 35.4    | 45.0   |
| 4              | PNJ    | 21/08/2018 | 105.0 | 100.0   | -4.8%        | 95.0    | 125.0  |
| <b>Average</b> |        |            |       |         | <b>14.3%</b> |         |        |

Source: BSC Research

| Ticker | Sector           | Close (VND k) | % Day | Beta | Market cap (USD Mil) | Liquidity (USD Mil) | EPS    | P/E  | P/B | Foreign owned | ROE   |
|--------|------------------|---------------|-------|------|----------------------|---------------------|--------|------|-----|---------------|-------|
| MWG    | Retail           | 118.4         | -1.3% | 0.6  | 1,662                | 3.6                 | 8,472  | 14.0 | 5.1 | 49.0%         | 43.9% |
| PNJ    | Retail           | 100.0         | -3.0% | 0.9  | 705                  | 3.9                 | 5,110  | 19.6 | 4.8 | 49.0%         | 33.9% |
| BVH    | Insurance        | 90.3          | -2.4% | 1.5  | 2,752                | 0.4                 | 1,816  | 49.7 | 4.2 | 24.8%         | 8.5%  |
| PVI    | Insurance        | 29.2          | -1.7% | 0.7  | 293                  | 0.1                 | 1,984  | 14.7 | 1.0 | 43.9%         | 10.3% |
| VIC    | Real Estate      | 102.1         | -1.3% | 1.0  | 14,168               | 1.5                 | 1,292  | 79.0 | 7.3 | 7.5%          | 11.2% |
| VRE    | Real Estate      | 37.9          | -3.7% | 1.1  | 3,133                | 3.6                 | 791    | 47.9 | 2.8 | 31.5%         | 5.7%  |
| NVL    | Real Estate      | 64.8          | -0.3% | 0.8  | 2,557                | 1.2                 | 2,534  | 25.6 | 4.2 | 8.9%          | 18.7% |
| REE    | Real Estate      | 35.4          | -1.1% | 1.1  | 477                  | 0.8                 | 5,319  | 6.7  | 1.3 | 49.0%         | 20.9% |
| DXG    | Real Estate      | 27.2          | -4.2% | 1.5  | 405                  | 7.1                 | 2,870  | 9.5  | 2.2 | 45.8%         | 26.2% |
| SSI    | Securities       | 30.7          | -2.8% | 1.3  | 667                  | 4.4                 | 2,585  | 11.9 | 1.7 | 55.6%         | 14.4% |
| VCI    | Securities       | 61.3          | -3.0% | 1.0  | 434                  | 0.3                 | 4,289  | 14.3 | 3.3 | 41.3%         | 30.5% |
| HCM    | Securities       | 60.1          | -2.6% | 1.3  | 339                  | 0.7                 | 6,129  | 9.8  | 2.7 | 61.0%         | 29.3% |
| FPT    | Technology       | 44.1          | -0.2% | 0.9  | 1,176                | 1.2                 | 5,094  | 8.7  | 2.3 | 49.0%         | 28.6% |
| FOX    | Technology       | 51.0          | -0.2% | 0.4  | 501                  | 0.0                 | 3,453  | 14.8 | 3.8 | 0.2%          | 26.5% |
| GAS    | Oil & Gas        | 103.0         | 0.0%  | 1.6  | 8,571                | 1.9                 | 5,796  | 17.8 | 4.6 | 3.6%          | 27.4% |
| PLX    | Oil & Gas        | 67.4          | -0.6% | 1.5  | 3,396                | 2.2                 | 3,240  | 20.8 | 4.2 | 11.0%         | 18.3% |
| PVS    | Oil & Gas        | 21.8          | 1.9%  | 1.8  | 423                  | 7.0                 | 1,248  | 17.5 | 0.9 | 19.4%         | 5.3%  |
| BSR    | Oil & Gas        | 17.2          | -1.1% | 0.8  | 2,319                | 1.0                 | N/A    | N/A  | N/A | 42.9%         | 23.0% |
| DHG    | Pharmacy         | 92.7          | 0.4%  | 0.4  | 527                  | 1.4                 | 4,035  | 23.0 | 4.1 | 46.1%         | 18.4% |
| DPM    | Fertilizer       | 17.7          | 0.9%  | 1.0  | 301                  | 0.3                 | 1,444  | 12.3 | 0.9 | 20.2%         | 8.0%  |
| DCM    | Fertilizer       | 10.2          | 0.0%  | 0.6  | 234                  | 0.1                 | 790    | 12.9 | 0.8 | 4.0%          | 6.6%  |
| VCB    | Banking          | 61.0          | -2.4% | 1.4  | 9,542                | 5.5                 | 3,140  | 19.4 | 3.8 | 20.8%         | 20.5% |
| BID    | Banking          | 32.5          | -5.5% | 1.7  | 4,831                | 5.9                 | 2,344  | 13.9 | 2.2 | 2.6%          | 16.8% |
| CTG    | Banking          | 25.9          | -4.6% | 1.6  | 4,193                | 9.3                 | 2,085  | 12.4 | 1.4 | 30.0%         | 12.2% |
| VPB    | Banking          | 25.7          | -0.8% | 1.2  | 2,707                | 5.3                 | 2,663  | 9.6  | 2.2 | 23.5%         | 26.9% |
| MBB    | Banking          | 23.1          | -2.5% | 1.2  | 2,170                | 7.0                 | 2,113  | 10.9 | 1.7 | 20.0%         | 16.3% |
| ACB    | Banking          | 38.0          | -2.8% | 1.2  | 1,792                | 10.0                | 3,320  | 11.4 | 2.2 | 30.0%         | 21.7% |
| BMP    | Plastic          | 56.8          | 1.1%  | 0.8  | 202                  | 0.5                 | 5,642  | 10.1 | 2.0 | 74.9%         | 19.6% |
| NTP    | Plastic          | 48.3          | -0.2% | 0.5  | 187                  | 0.0                 | 4,932  | 9.8  | 2.1 | 23.0%         | 22.0% |
| MSR    | Resources        | 22.5          | -1.3% | 1.2  | 880                  | 0.1                 | 229    | 98.3 | 1.8 | 2.1%          | 1.8%  |
| HPG    | Steel            | 39.0          | -2.4% | 0.9  | 3,601                | 7.7                 | 4,210  | 9.3  | 2.3 | 39.0%         | 30.1% |
| HSG    | Steel            | 10.7          | -1.4% | 1.3  | 178                  | 0.8                 | 1,861  | 5.7  | 0.8 | 20.2%         | 14.0% |
| VNM    | Consumer staples | 156.7         | 0.0%  | 0.6  | 9,887                | 4.7                 | 6,078  | 25.8 | 8.7 | 59.1%         | 34.9% |
| SAB    | Consumer staples | 223.8         | -1.0% | 0.8  | 6,240                | 0.6                 | 7,082  | 31.6 | 9.1 | 9.7%          | 31.2% |
| MSN    | Consumer staples | 94.0          | -1.1% | 1.2  | 4,305                | 3.4                 | 5,370  | 17.5 | 5.8 | 28.9%         | 32.2% |
| SBT    | Consumer staples | 18.7          | -1.6% | 0.8  | 403                  | 2.7                 | 1,053  | 17.8 | 1.5 | 8.4%          | 11.1% |
| ACV    | Transport        | 82.1          | -1.0% | 0.8  | 7,771                | 0.1                 | 1,883  | 43.6 | 6.5 | 3.6%          | 15.9% |
| VJC    | Transport        | 145.1         | -7.0% | 1.1  | 3,417                | 3.5                 | 9,463  | 15.3 | 7.4 | 24.7%         | 67.1% |
| HVN    | Transport        | 39.0          | -2.0% | 1.7  | 2,119                | 0.9                 | 1,727  | 22.6 | 3.2 | 9.2%          | 14.6% |
| GMD    | Transport        | 26.2          | -0.9% | 1.0  | 338                  | 0.7                 | 6,223  | 4.2  | 1.3 | 20.4%         | 30.1% |
| PVT    | Transport        | 17.5          | 0.3%  | 0.8  | 214                  | 0.2                 | 2,168  | 8.1  | 1.3 | 34.3%         | 17.2% |
| VCS    | Materials        | 91.1          | 0.7%  | 0.9  | 634                  | 1.3                 | 5,657  | 16.1 | 5.4 | 2.6%          | 46.4% |
| VGC    | Materials        | 18.3          | -2.1% | 0.9  | 357                  | 2.0                 | 1,299  | 14.1 | 1.3 | 24.1%         | 10.1% |
| HT1    | Materials        | 12.6          | -1.6% | 0.6  | 208                  | 0.2                 | 1,537  | 8.2  | 0.9 | 5.3%          | 10.9% |
| CTD    | Construction     | 163.0         | -1.5% | 0.7  | 555                  | 0.7                 | 20,360 | 8.0  | 1.7 | 43.4%         | 22.5% |
| VCG    | Construction     | 17.5          | -3.8% | 1.3  | 336                  | 1.6                 | 2,716  | 6.4  | 1.2 | 10.8%         | 20.4% |
| CII    | Construction     | 26.0          | -1.9% | 0.5  | 277                  | 0.3                 | (61)   | N/A  | 1.3 | 56.1%         | -0.3% |
| POW    | Electricity      | 13.8          | -2.1% | 0.6  | 1,405                | 1.0                 | 1,026  | 13.5 | 1.2 | 67.2%         | 9.1%  |
| NT2    | Electricity      | 26.4          | -0.6% | 0.7  | 330                  | 0.0                 | 2,912  | 9.1  | 2.1 | 21.6%         | 19.5% |

## Market statistics

### Top 5 leaders on the HSX

| Ticker | Price  | % Chg | Index pt | Volume    |
|--------|--------|-------|----------|-----------|
| VHM    | 104.90 | 0.87  | 0.75     | 225530.00 |
| YEG    | 209.70 | 6.99  | 0.12     | 142940.00 |
| VHC    | 79.00  | 2.60  | 0.06     | 109240.00 |
| SJS    | 19.80  | 4.21  | 0.03     | 272130.00 |
| TCH    | 27.35  | 0.92  | 0.03     | 658280.00 |

| Ticker | Price  | % Chg | Index pt | Volume    |
|--------|--------|-------|----------|-----------|
| BID    | 32.50  | -5.52 | -2.02    | 4.09MLN   |
| VJC    | 145.10 | -6.99 | -1.84    | 524240.00 |
| VCB    | 61.00  | -2.40 | -1.68    | 2.05MLN   |
| CTG    | 25.90  | -4.60 | -1.45    | 8.07MLN   |
| VIC    | 102.10 | -1.26 | -1.29    | 343190.00 |

### Top 5 gainers on the HSX

| Ticker | Price  | % Chg | Index pt | Volume    |
|--------|--------|-------|----------|-----------|
| YEG    | 209.70 | 6.99  | 0.12     | 142940.00 |
| TDW    | 23.75  | 6.98  | 0.00     | 10.00     |
| S4A    | 28.35  | 6.98  | 0.02     | 40.00     |
| MCP    | 24.65  | 6.94  | 0.01     | 70.00     |
| HAR    | 5.72   | 6.92  | 0.01     | 657740.00 |

### Top 5 losers on the HSX

| Ticker | Price  | % Chg | Index pt | Volume |
|--------|--------|-------|----------|--------|
| VJC    | 145.10 | -6.99 | -1.84    | 524240 |
| DTA    | 6.70   | -6.94 | 0.00     | 10     |
| TDG    | 7.12   | -6.93 | 0.00     | 669800 |
| VPK    | 4.44   | -6.92 | 0.00     | 220    |
| TNA    | 34.35  | -6.91 | -0.01    | 3720   |

Source: Bloomberg, BSC Research

### Top 5 leaders on HNX

| Ticker | Price | % Chg | Index pt | Volume  |
|--------|-------|-------|----------|---------|
| PVS    | 21.80 | 1.87  | 0.09     | 7.46MLN |
| HHC    | 72.20 | 9.89  | 0.06     | 700     |
| L14    | 51.00 | 7.37  | 0.04     | 96860   |
| VCS    | 91.10 | 0.66  | 0.02     | 320035  |
| SRA    | 70.20 | 9.86  | 0.01     | 101700  |

| Ticker | Price | % Chg | Index pt | Volume  |
|--------|-------|-------|----------|---------|
| ACB    | 38.00 | -2.81 | -1.20    | 5.96MLN |
| SHB    | 8.30  | -2.35 | -0.21    | 6.93MLN |
| VGC    | 18.30 | -2.14 | -0.08    | 2.65MLN |
| SHS    | 14.50 | -4.61 | -0.06    | 1.97MLN |
| VCG    | 17.50 | -3.85 | -0.05    | 2.11MLN |

### Top 5 gainers on the HNX

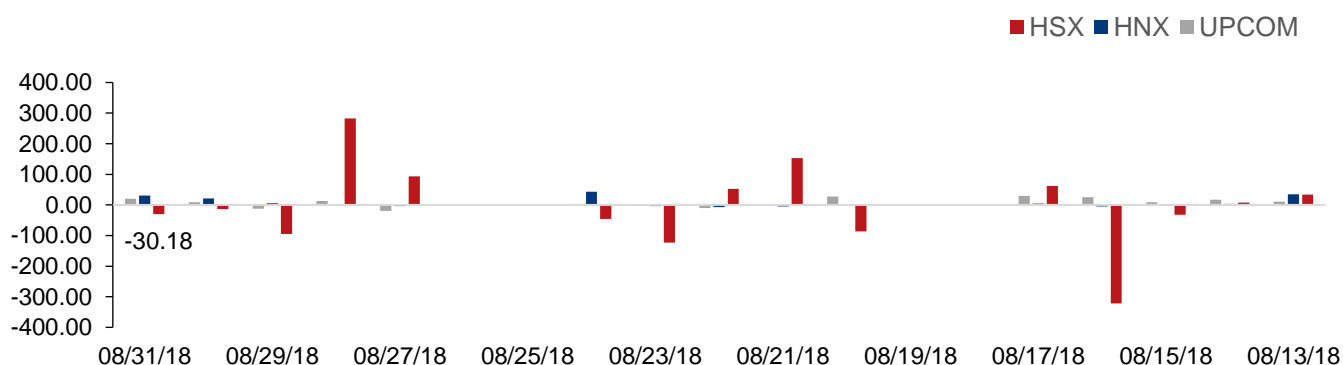
| Ticker | Price | % Chg | Index pt | Volume |
|--------|-------|-------|----------|--------|
| PBP    | 11.00 | 10.00 | 0.00     | 6600   |
| HHC    | 72.20 | 9.89  | 0.06     | 700    |
| SRA    | 70.20 | 9.86  | 0.01     | 101700 |
| TA9    | 11.20 | 9.80  | 0.01     | 100    |
| SPP    | 6.80  | 9.68  | 0.01     | 235590 |

### Top 5 losers on the HNX

| Ticker | Price | % Chg  | Index pt | Volume |
|--------|-------|--------|----------|--------|
| DPS    | 0.80  | -11.11 | 0.00     | 291340 |
| VNF    | 9.10  | -9.90  | 0.00     | 31100  |
| SGH    | 4.60  | -9.80  | 0.00     | 10100  |
| CAN    | 9.30  | -9.71  | -0.01    | 100    |
| MCF    | 5.80  | -9.38  | 0.00     | 500    |

Exhibit 3

### Foreign transaction



Source: HSX, HNX, BSC Research

## Disclosure

*The information, statements, forecasts and projections contained herein, including any expression of opinion, are based upon sources believed to be reliable but their accuracy completeness or correctness are not guaranteed. Expressions of opinion herein were arrived at after due and careful consideration and they were based upon the best information then known to us, and in our opinion are fair and reasonable in the circumstances prevailing at the time. Expressions of opinion contained herein are subject to change without notice. This document is not, and should not be construed as, an offer or the solicitation of an offer to buy or sell any securities. BSC and other companies in the BSC and/or their officers, directors and employees may have positions and may affect transactions in securities of companies mentioned herein and may also perform or seek to perform investment banking services for these companies. This document is for private circulation only and is not for publication in the press or elsewhere. BSC accepts no liability whatsoever for any direct or consequential loss arising from any use of this or its content. The use of any information, statements forecasts and projections contained herein shall be at the sole discretion and risk of the user. No part of this material may be (i) copied, photocopied or duplicated in any form by any mean or (ii) redistributed without the prior written consent of BIDV Securities Company (BSC).*

### **BSC Headquarters**

BIDV Tower, 10th & 11th Floor  
35 Hang Voi, Hoan Kiem, Hanoi  
Tel: +84 4 3935 2722  
Fax: +84 4 2220 0669

### **Ho Chi Minh City Office**

146 Nguyen Cong Tru St, 9th Floor  
District 1, HCMC  
Tel: +84 8 3821 8885  
Fax: +84 8 3821 8510

<http://www.bsc.com.vn>

Bloomberg: BSCV <GO>

